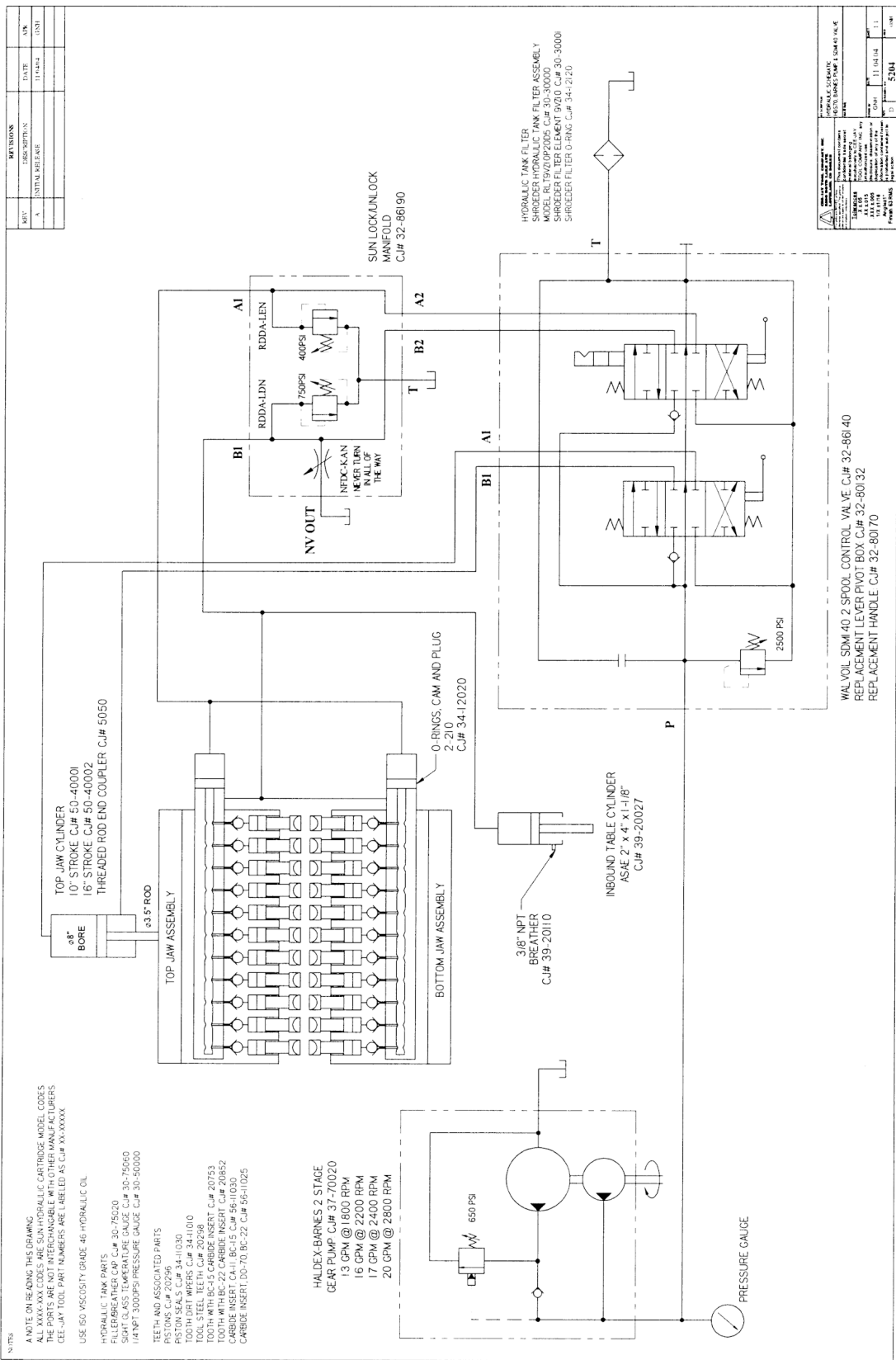


HYDRAULIC SCHEMATIC

(OLD STYLE)

18



REV.	DESCRIPTION	DATE	BY
A	INITIAL RELEASE	11/14/14	DSH

PARTS LIST		QUANTITY	
1	HYDRAULIC TANK FILTER	1	
1	SHREDDER HYDRAULIC TANK FILTER ASSEMBLY	1	
1	MODEL RL19V210P2005	1	
1	SHREDDER FILTER ELEMENT 9V210	1	
1	SHREDDER FILTER O-RING	1	
1	C. # 34-1-2020	1	

NOTE ON READING THIS DRAWING:
 ALL XXXX-XXX CODES ARE SUN HYDRAULIC CARTRIDGE MODEL CODES
 AND ARE SUBJECT TO CHANGE WITHOUT NOTICE FROM OTHER MANUFACTURERS.
 SEE CEE-JAY TOOL PART NUMBERS ARE LABELED AS C. # XX-XXXX.

USE ISO VISCOSITY GRADE 46-HYDRAULIC OIL

HYDRAULIC TANK PARTS:
 FULLER-BRIDGE CARTRIDGE C. # 30-75220
 SMART GLASS TEMPERATURE GAUGE C. # 30-75660
 1/4" NPT. 3000PSI PRESSURE GAUGE C. # 30-50000

TEETH AND ASSOCIATED PARTS:
 CARTRIDGE SEALS C. # 34-11030
 PISTON SEALS C. # 34-11030
 TOOL DRIFT WIPERS C. # 34-11010
 TOOL STEEL TEETH C. # 20298
 TOOTH WITH BC-15 CARBIDE INSERT C. # 20793
 CARTRIDGE WITH BC-15 CARBIDE INSERT C. # 5611952
 CARBIDE INSERT CA-11 BC-15 C. # 5611950
 CARBIDE INSERT DO-70 BC-22 C. # 56-11025

HALDEX-BARNES 2 STAGE
 GEAR PUMP C. # 37-70020
 13 GPM @ 1600 RPM
 16 GPM @ 2200 RPM
 17 GPM @ 2400 RPM
 20 GPM @ 2800 RPM

WAL VOL SDM 40 2 SPOOL CONTROL VALVE C. # 32-86140
 REPLACEMENT LEVER PIVOT BOX C. # 32-80132
 REPLACEMENT HANDLE C. # 32-80170