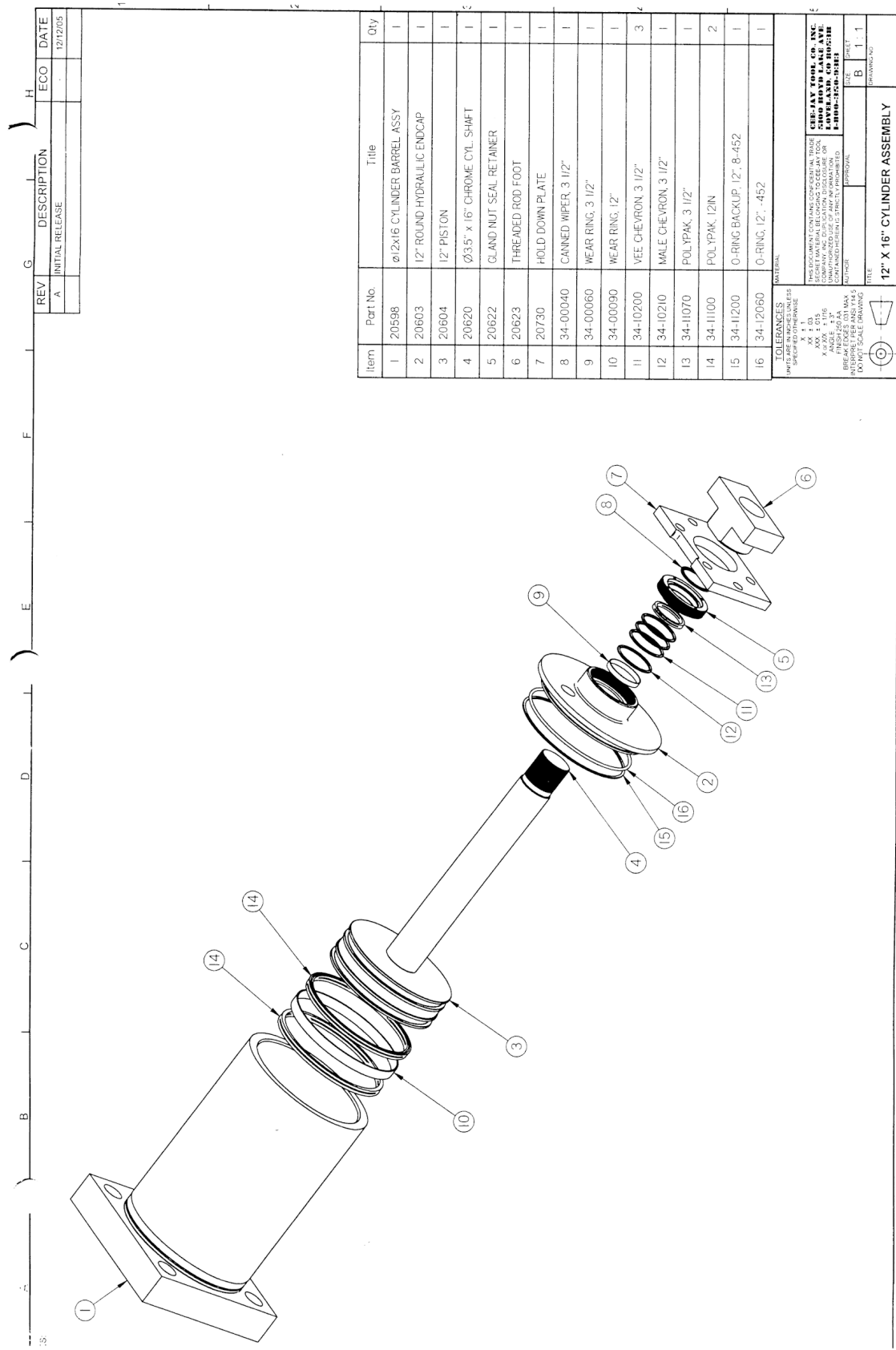


CYLINDER SCHEMATIC

32



REV	DESCRIPTION	ECO	DATE
A	INITIAL RELEASE		12/12/05

Item	Part No.	Title	Qty
1	20598	Ø12x16 CYLINDER BARREL ASSY	1
2	20603	12" ROUND HYDRAULIC ENDCAP	1
3	20604	12" PISTON	1
4	20620	Ø3.5" x 16" CHROME CYL. SHAFT	1
5	20622	GLAND NUT SEAL RETAINER	1
6	20623	THREADED ROD FOOT	1
7	20730	HOLD DOWN PLATE	1
8	34-00040	CANNED WIPER, 3 1/2"	1
9	34-00060	WEAR RING, 3 1/2"	1
10	34-00090	WEAR RING, 12"	1
11	34-10200	VEE CHEVRON, 3 1/2"	3
12	34-10210	MALE CHEVRON, 3 1/2"	1
13	34-11070	POLYPAK, 12IN	1
14	34-11100	POLYPAK, 12IN	2
15	34-12000	O-RING BACKUP, 12", 8-452	1
16	34-12060	O-RING, 12", -452	1

TOLERANCES
 UNLESS OTHERWISE SPECIFIED TO THE DIMENSIONS:
 X .1
 XX .015
 XXX .010
 ANGLE .1°
 BREAK EDGES (Ø) MAX .005
 POINTS, FILE AND RADIUS .005
 UNLESS OTHERWISE SPECIFIED

MATERIAL
 THIS DOCUMENT CONTAINS CONFIDENTIAL TRADE SECRET MATERIAL BELONGING TO CEE JAY TOOL COMPANY. UNAUTHORIZED USE OF ANY INFORMATION OR MATERIAL HEREIN IS STRICTLY PROHIBITED.
 CEE-JAY TOOL COMPANY
 12000 12TH AVENUE
 LAWRENCE, CO 62438
 303-636-1100

APPROVAL
 AUTH: [Signature] DATE: [Date]
 B 1 1
 B 1 1
 B 1 1

TITLE
 12" X 16" CYLINDER ASSEMBLY
 (DRAWING NO)