

NOTES:

A NOTE ON READING THIS DRAWING ALL XXXX-XXX CODES ARE SUN HYDRAULIC CARTRIDGE MODEL CODES. THE PORTS ARE NOT INTERCHANGEABLE WITH OTHER MANUFACTURERS. CEE-JAY TOOL PART NUMBERS ARE LABELED AS C.J# XX-XXXX.

REPLACEMENT SEAL KITS
 8" CENTER CYLINDER PISTON AND BARREL SEAL KIT. C.J# 34-20080
 12" OUTER CYLINDER PISTON AND BARREL SEAL KIT. C.J# 34-20090
 3-1/2" ROD GLAND SEAL KIT FOR ALL TOP JAW CYLINDERS. C.J# 34-20100

HYDRAULIC TANK FILTER
 SHROEDER FILTER ASSEMBLY MODEL RLT9VZ10P20D5. C.J# 30-30000
 SHROEDER FILTER ELEMENT 9VZ10. C.J# 30-30001
 SHROEDER FILTER O-RING. C.J# 34-12120

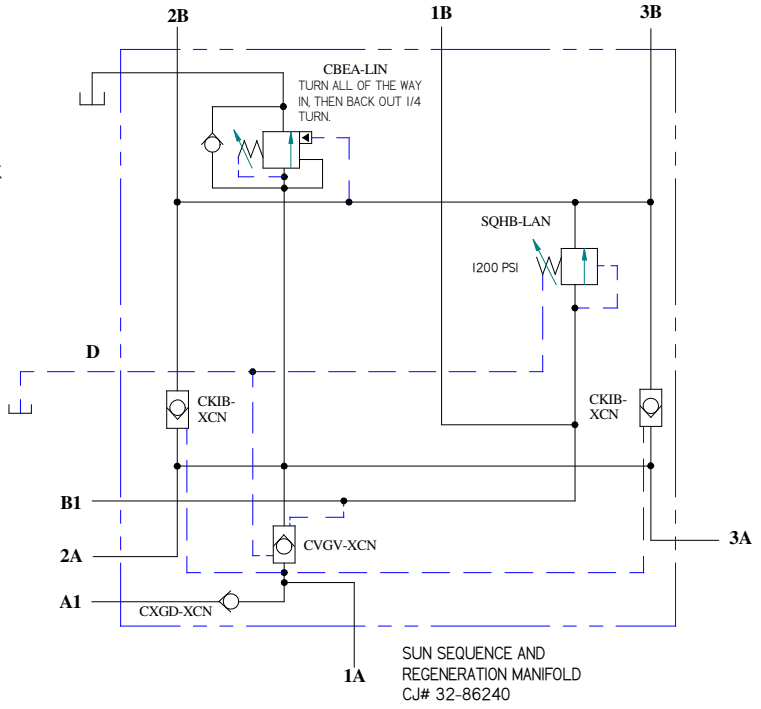
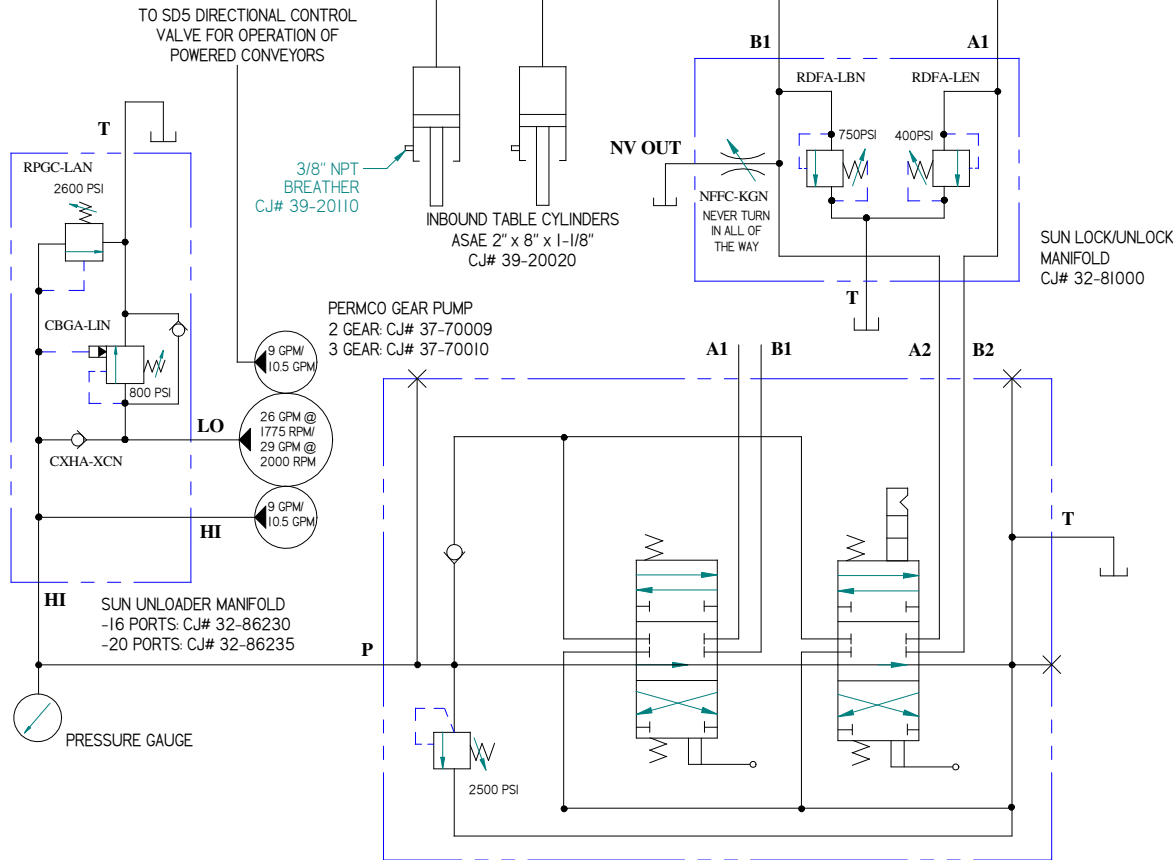
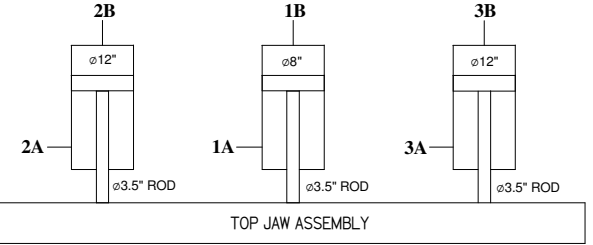
HYDRAULIC TANK PARTS
 FILLER/BREATHER CAP. C.J# 30-75020
 SIGHT GLASS TEMPERATURE GAUGE. C.J# 30-75060
 1/4"NPT 3000PSI PRESSURE GAUGE. C.J# 30-50000

VENEUR GAGE BALL VALVE. C.J# 32-86380

VENEUR GAGE CYLINDER
 1-1/2" x 6" x 3/4"
 C.J# 39-20010

CAM AND PLUG O-RINGS
 2-210
 C.J# 34-12020

CAMS



WALVOIL SD18 2 SPOOL CONTROL VALVE AS SHOWN ABOVE. C.J# 32-86120, 3 SPOOL: C.J# 32-86130
 WALVOIL SD25 2 SPOOL CONTROL VALVE. C.J# 32-86021, 3 SPOOL: C.J# 32-86025
 REPLACEMENT LEVER PIVOT BOX. C.J# 32-86070
 REPLACEMENT HANDLE. C.J# 32-86360

REVISIONS			
REV.	DESCRIPTION	DATE	APR
A	INITIAL RELEASE	3/05/01	EGIB
B	ADDED CEEJAY PART #S	9/24/04	GNH

TOLERANCES X ± .05 XX ± .015 XXX ± .005 XXXX ± .001 Angles 1° Finish 63 RMS	This document contains confidential trade secret information belonging to SUN HYDRAULIC. No part of this document may be reproduced, stored in a retrieval system, or transmitted in any form or by any means, electronic, mechanical, photocopying, recording, or by any information storage and retrieval system, without the prior written permission of SUN HYDRAULIC.	
	DATE: 3/05/01 DRAWN BY: GNH CHECKED BY: GNH PART NO: 20268	TITLE: HYDRAULIC SCHEMATIC 3 CYLINDER 350 TON CHIPS CUTTER